

Pointwise FAQ

It has been many years in the making, and Pointwise, our next generation meshing product, is now on the streets. There are many questions about Pointwise and how it affects plans for our classic mesher, Gridgen. Here are some common questions and answers.

What is Pointwise? Pointwise is our next generation mesher. It combines the proven meshing techniques we have developed over the 25-year history of Gridgen and a new, modern software architecture and user interface that simplify the meshing process.

Why is Pointwise so different from Gridgen? The short answer is because it is easier to use. Pointwise uses noun-verb interaction in which you first pick the objects you want to work on and then specify the action to take. For instance, to scale some database surfaces and grid domains, you first pick the ones you want to scale, then select Scale from the Edit, Transform menu or toolbar. This saves time because the entities are still selected when you complete the action and are ready for you to use in some other operation. It also means you can select different types of entities for the same action (database surfaces and domains in our example), which is something you cannot do in Gridgen.

Why are some of Gridgen's features missing from Pointwise? Pointwise will eventually have all of Gridgen's

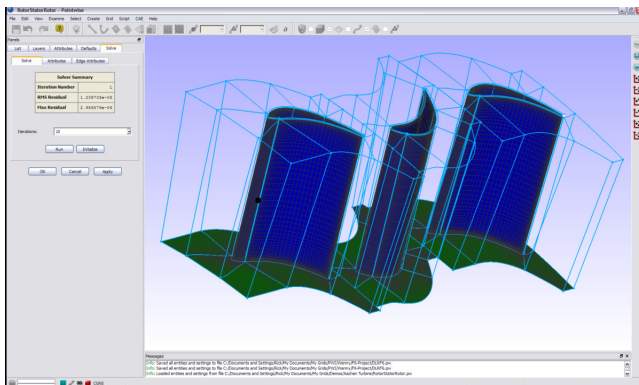
capabilities and more. We released it once the basic grid generation and database features were complete for two reasons. First, many people, especially new users, do not need the advanced features of Gridgen, but they can benefit now from the simpler interface and automation tools in Pointwise. Second, we want to give current Gridgen users plenty of time to become familiar with the new user interface and give us feedback on how it works.

When will a particular Gridgen feature be included in Pointwise? We are adding new functionality in a series of releases at approximately six-month intervals. The particular features in a given release can change, depending on customer demand, so we are not publishing a schedule. Subscribe to our online newsletter, The Connector, and you can read the prerelease notes for the upcoming release to see the new features it will provide.

Is Gridgen going to go away? Not in the near future. Once all of Gridgen's functionality has been ported to Pointwise, Gridgen will go into maintenance-only mode. No new features will be added to Gridgen after that point, but we may do some bug-fix releases. Gridgen and Pointwise will continue to co-exist for some time. Gridgen will not go away until our customers let us know they are happy using Pointwise for all their work.

Can I use both Pointwise and Gridgen? Yes, all the licenses we now issue let you run both Pointwise and Gridgen. Pointwise reads and writes Gridgen grid and database files, so you can move your work back and forth between the two as you see fit. Pointwise already has some features, like floating block boundaries in the elliptic PDE solver, that Gridgen does not have, and it has many more automation tools so you can save time by doing even just part of a project in Pointwise.

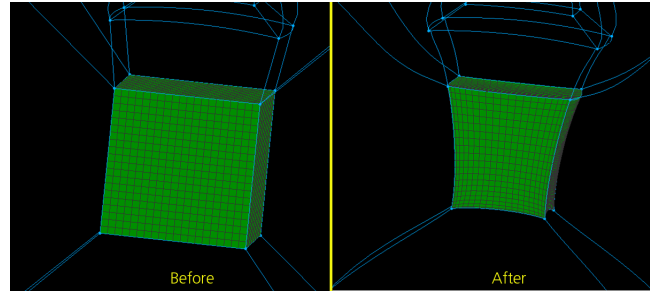
Can I run my GridgenGlyph scripts in Pointwise? Not yet. Pointwise uses its own scripting language, Glyph2, that is object-oriented and reflects the noun-verb model that Pointwise uses interactively. We are working on methods to either translate or interpret existing GridgenGlyph scripts in Pointwise for future release.



Pointwise's flat graphical user interface streamlines the grid generation process.

Do I have to buy a new license to use Pointwise? No. There is no extra charge to use Pointwise if you already have a Gridgen license. Our license files let you run both Gridgen and Pointwise. If you are using a version of Gridgen older than V15.11, your current license file will not work with Pointwise. However, just go to pointwise.com/licenses and we will be happy to generate a new license file for you.

How can I try Pointwise? Go to pointwise.com/downloads to download and install Pointwise. It comes with a set of tutorial problems you can work to become familiar with the new interface and workflow. Give it a try!



Floating block boundaries in the elliptic PDE solver improve grid quality across multiple blocks.

What is unique about Pointwise?

Aside from its new graphical interface, there are some useful capabilities in Pointwise that are not available in Gridgen. Here are some of the top features unique to Pointwise:

- *Undo* -- Pointwise has multiple-level undo and redo that allow you to go back several steps in the grid generation process if you make a mistake or just want to get back to where you were.
- *Floating block boundaries* -- The block structured solver in Pointwise has a floating boundary condition that smooths block face shapes for improved grid quality.
- *64-bit versions* -- Pointwise already is shipping 64-bit versions for Linux to break the 2 GByte memory access barrier. 64-bit versions for other platforms are in the works.
- *Transform grid and database together* -- You can select database and grid entities at the same time, then translate, rotate, and scale them. After the transformation, the grid entities still are associated with the underlying database.
- *100% journalable* -- Since scripting and journaling was designed into Pointwise from the beginning, every interactive command can be journaled. Turn on journaling and all commands still are available.
- *Interrupt lengthy processes* -- All commands that take more than a few seconds can be interrupted by clicking on the stop sign in the lower left corner of the Pointwise window.

Toll Free (800) 4PTWISE www.pointwise.com

POINTWISE[®]
Reliable CFD Meshing

RETURN SERVICE REQUESTED

First Class
Presort
US Postage
PAID
Arlington, TX
Permit 419

213 South Jennings Avenue
Fort Worth, Texas 76104-1107

POINTWISE[®]